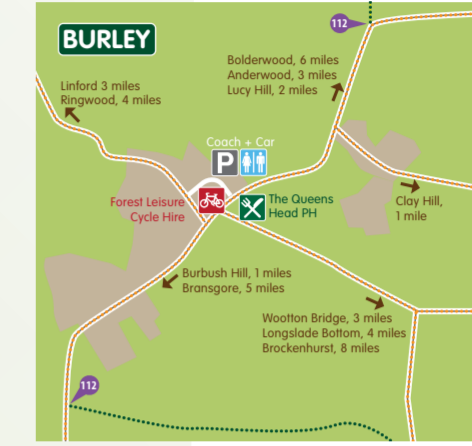
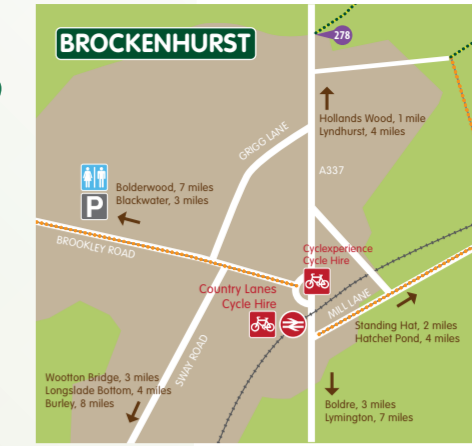


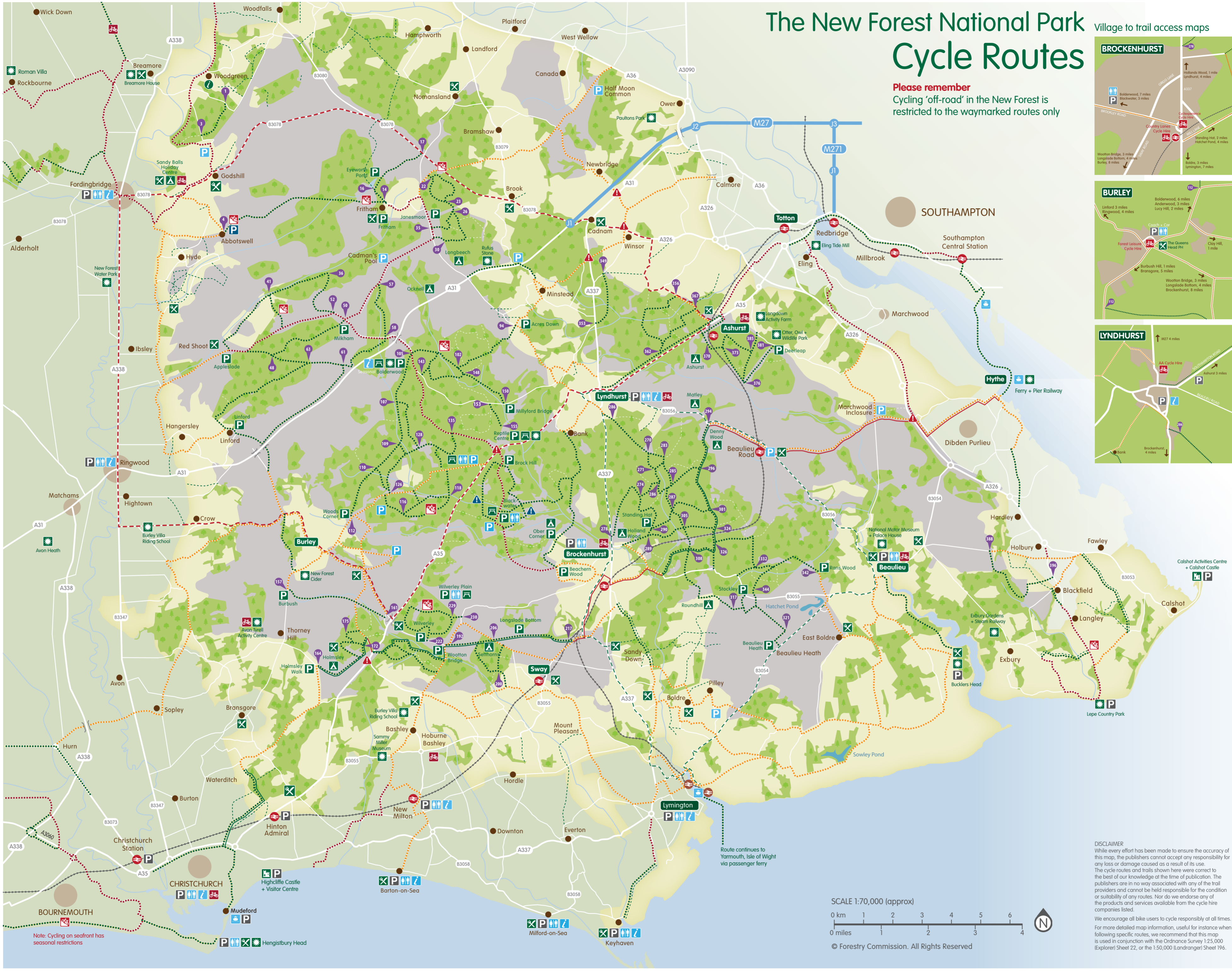
# The New Forest National Park Cycle Routes

**Please remember**  
Cycling 'off-road' in the New Forest is restricted to the waymarked routes only

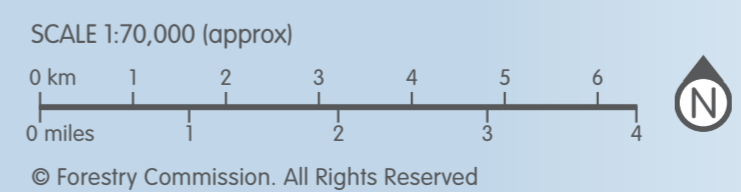
Village to trail access maps



- KEY**
- Cycling in the New Forest**
    - Approved off road routes, usually gravel or asphalt
    - Approved on road routes
    - Other Routes; relatively quiet, unaudited links to approved routes
  - Warning that route crosses a main road or other potential hazard. Take care
  - Ford that may be impassable after heavy rain
  - Steep hill or other more challenging conditions (IMBA classification)
  - Gravel tracks**
    - Non-cycle network; cycling prohibited
    - Bridleways + Byways
  - Way markers**
    - Numbered Way Marker Posts
  - Visitor Information**
    - Travelling**
      - The New Forest Tour Bus carries bikes free of charge
    - Parking in National Park managed by the Forestry Commission linking directly to the cycle track network
    - Other Parking in National Park
    - Pay and Display Parking
    - Cycle Hire
    - Station
    - Ferry Services
    - Visitor
      - Tourist Information Office
      - Local Information
      - Toilets
      - Food and Drink
      - Visitor Attraction
      - Castle
      - Camping in The Forest
      - Picnic Area
  - Land Use**
    - New Forest National Park
    - Mixed Woodland
    - Heathland
    - Village New Forest Town / Village
    - Larger Town / Village
    - Village
  - National Cycle Route**
    - National Cycle Route off road
    - National Cycle Route on road
  - Roads**
    - Cycling in the New Forest is permitted on most public highways. The usual rules of the road apply but please follow our Cycle Code to make your ride safer for yourself and other forest users. These symbols identify the main roads and are not recommended for cyclists.
    - M27 Motorway
    - A36 Main Road
    - B3054 Minor Road



**DISCLAIMER**  
 While every effort has been made to ensure the accuracy of this map, the publishers cannot accept any responsibility for any loss or damage caused as a result of its use. The cycle routes and trails shown here were correct to the best of our knowledge at the time of publication. The publishers are in no way associated with any of the trail providers and cannot be held responsible for the condition or suitability of any routes. Nor do we endorse any of the products and services available from the cycle hire companies listed.  
 We encourage all bike users to cycle responsibly at all times. For more detailed map information, useful for instance when following specific routes, we recommend that this map is used in conjunction with the Ordnance Survey 1:25,000 (Explorer) Sheet 22, or the 1:50,000 (Landranger) Sheet 196.



Note: Cycling on seafront has seasonal restrictions